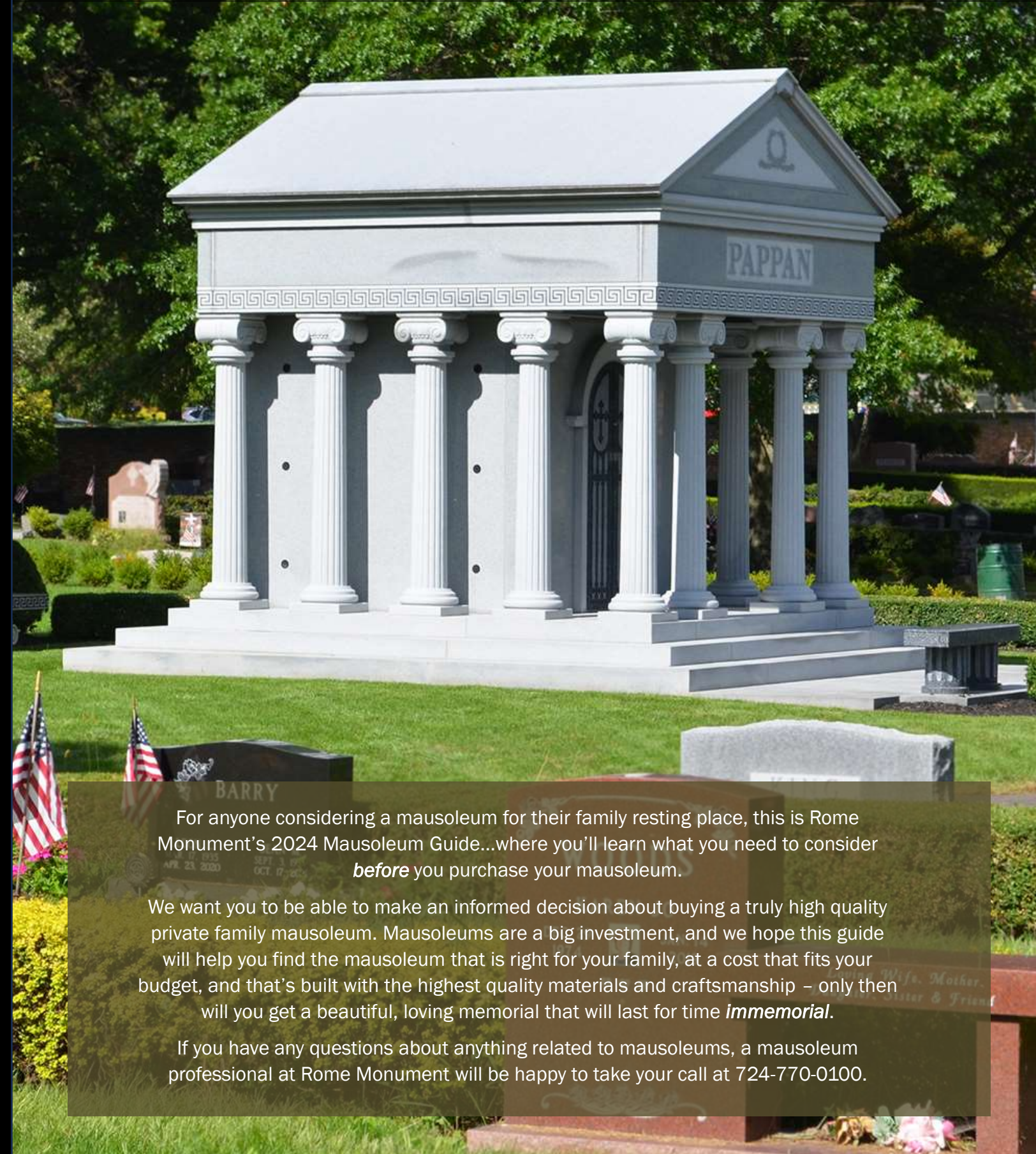




# 2024 Mausoleum Guide

BURIALS, COST, CRYPTS, TYPES & MORE!



For anyone considering a mausoleum for their family resting place, this is Rome Monument's 2024 Mausoleum Guide...where you'll learn what you need to consider ***before*** you purchase your mausoleum.

We want you to be able to make an informed decision about buying a truly high quality private family mausoleum. Mausoleums are a big investment, and we hope this guide will help you find the mausoleum that is right for your family, at a cost that fits your budget, and that's built with the highest quality materials and craftsmanship – only then will you get a beautiful, loving memorial that will last for time ***immemorial***.

If you have any questions about anything related to mausoleums, a mausoleum professional at Rome Monument will be happy to take your call at 724-770-0100.



# Table of Contents

## ROME MONUMENT'S 2024 MAUSOLEUM GUIDE

**CHAPTER 1:** The Difference: Private & Public Mausoleums

**CHAPTER 2:** Types of Private Family Mausoleums

**CHAPTER 3:** Styles of Private Family Mausoleums

**CHAPTER 4:** How Ashes Are Buried in Mausoleums

**CHAPTER 5:** Walk-In and Non Walk-In Mausoleums

**CHAPTER 6:** Common Reasons For a Mausoleum Burial

**CHAPTER 7:** Choosing a Cemetery For Your Mausoleum

**CHAPTER 8:** Ordering Your Mausoleum Pre-Need

**CHAPTER 9:** Etchings and Engravings

**CHAPTER 10:** Materials: Granite, Marble & Bronze

**CHAPTER 11:** Design: Sculptures, Statues & Columns

**CHAPTER 12:** Design: Architectural Styles

**CHAPTER 13:** Design: Walk-In Mausoleum Interiors

**CHAPTER 14:** Design: Mausoleum Landscape Ideas

**CHAPTER 15:** Design: Mausoleum Accessories

**CHAPTER 16:** Tips To Buying a High Quality Mausoleum

**CHAPTER 17:** Quality: Mausoleum Construction Standards

**CHAPTER 18:** Mausoleum Price Guide

**CHAPTER 19:** Keys To Hiring a Topnotch Mausoleum Company

**CHAPTER 20:** How To Order a Custom Mausoleum

**CHAPTER 21:** A Quality Mausoleum Design & Construction Company

# CHAPTER 1

## The Difference: Private & Public Mausoleums

### ROME MONUMENT'S 2024 MAUSOLEUM GUIDE

You have many choices when it comes to disposition of the ashes or body of the deceased. In-ground burials in graves, spreading the ashes, or above ground interment in a freestanding above ground structure called a mausoleum are the most popular. Mausoleums have many benefits which we'll discuss in Chapter 8, but there are two different types of mausoleums – private family mausoleums and public mausoleums – which we'll look at here.



#### PRIVATE FAMILY MAUSOLEUMS

Private family mausoleums are built for one family, paid for by that family, and placed on a burial plot or plots purchased by the family. As opposed to headstones that mark below ground graves, mausoleums are free-standing above-ground structures that hold the bodies or ashes of the deceased. Private mausoleums can contain crypts for caskets and niches for ashes and cremation urns. Depending on how the private mausoleum is constructed, crypts and niches can be accessed on the interior or exterior of the mausoleum. The crypts and niches are covered with a piece of granite called a crypt or niche front or door.



#### PUBLIC MAUSOLEUMS

Public or community mausoleums are above ground buildings memorializing many unrelated individuals. Public or community mausoleums are built by a cemetery or other institution usually on cemetery grounds. Families and individuals purchase private niches where the casket is interred and sealed with a stone or bronze identifying marker. As with private family mausoleums, public mausoleums provide you with a safe, clean, enclosure that will keep your casket or vault dry, avoiding any contact with the ground.



# CHAPTER 2

## Types of Private Family Mausoleums

### ROME MONUMENT'S 2024 MAUSOLEUM GUIDE

There are three basic types of mausoleums: Above Ground Burial Vaults (Lawn Style), Garden or Outdoor Mausoleums, and Estate Walk-in and Non Walk-in Mausoleum Buildings. When deciding which type is right for your family, you'll need to take into consideration the number of family members you expect to be interred, the style you prefer, your budget, and the availability and requirements of spaces in your cemetery. Above ground burial vaults can contain any number of crypts and be for any number of people.



**SINGLE CRYPT LAWN STYLE MAUSOLEUMS** sit at ground level and have one crypt for one body.



**DOUBLE OR COMPANION CRYPT LAWN STYLE MAUSOLEUMS** are generally for spouses. They can be side by side, front and back, or one atop the other.



**MULTI-CRYPT LAWN STYLE MAUSOLEUMS** are ground level structures that hold more than one body. They can be as simple or as decorative as you like.



**GARDEN/OUTDOOR MAUSOLEUMS** have no interior space. The crypts/niches are on the outside.



**WALK-IN MAUSOLEUMS** have a working door and an interior space for the family to visit. The crypts are on the inside. It can have niches or a columbarium for cremated remains, and places for personal art and artifacts.



# CHAPTER 3

## Styles of Private Family Mausoleums

### ROME MONUMENT'S 2024 MAUSOLEUM GUIDE

Mausoleums are not one size fits all. There are lots of different mausoleum styles, one that may fit your needs and budget perfectly! A mausoleum company that is quality-driven can advise you on the ideal style for your private family mausoleum based on the number of bodies to be buried there, the cemetery regulations, the location, the cost, and other factors.

#### SIMPLE MAUSOLEUMS



Mausoleums can be as simple as a granite “butter dish”-style that is just large enough to cover a coffin.

#### CLASSICAL ARCHITECTURE



Contemporary mausoleum designs often are inspired by architectural styles of old...from Greek Classical to Gothic.

#### MODERN ARCHITECTURE



Modern styles have sleek lines and incorporate glass and other newer materials.

#### PRIVATE FAMILY MAUSOLEUMS



These mausoleums are for one family only and custom designed to each family's preferences.

#### PERSONALIZED FAMILY ESTATE



Estate mausoleums are larger structures with multiple crypts/niches to hold several generations of family.

#### COLUMBARIA



A Columbarium is a freestanding structure with niches for cremated remains & urns only.

#### PRE-ASSEMBLED



Several mausoleum styles are prebuilt for purchasing and customizing with artwork and lettering.

#### SMALL WALK-IN STYLE



A Walk-In Mausoleum with indoor crypts and space for visitors doesn't have to be a large structure.

#### GARDEN/OUTDOOR



These are open air structures without a defined walk-in interior. The crypt openings are on the outside.



# CHAPTER 4

## How Ashes Are Buried in Mausoleums

### ROME MONUMENT'S 2024 MAUSOLEUM GUIDE

Once a body is cremated, the container with the ashes is delivered to the family who have several options for the ashes' disposition. They can scatter the remains, place them in an urn, place them in a personalized cremation marker or cremation monument on your property or in a cemetery, bury the cremated remains in a grave in a cemetery, or entomb them above-ground by placing the ashes in a niche or mausoleum in a cemetery.



Private mausoleums can be built to contain niches for ashes and cremation urns. Niches can be accessed either on the interior or exterior of the mausoleum.



The niches are covered with a piece of granite called a niche front or door. Bronze faceplates denote the family member who is interred there.



A group of niches for ashes or cremation urns is called a columbarium. This can either be a free-standing granite structure or incorporated within the construction of a mausoleum.



A more common option is to design smaller cremation niches in the interior or exterior mausoleum walls for urns and ashes, each one holding the remains of one family member.



In a private family mausoleum, an urn can also share space with a casket in a crypt or it can occupy its own crypt.

# CHAPTER 5

## Walk-In & Non Walk-In Mausoleums

### ROME MONUMENT'S 2024 MAUSOLEUM GUIDE

When choosing your design for a mausoleum, one of the things to consider is whether you want a mausoleum with an indoor space that can be accessed by family members when visiting the interment site. If so, you want to choose a walk-in mausoleum. These, of course, are larger structures and will cost more for the creation of an indoor environment that includes the crypts and niches of the deceased.

#### WALK-IN MAUSOLEUMS



Walk-in mausoleums have crypt openings on the inside of the structure.



Walk-In mausoleums have working bronze doors that are opened with a private code.



They are filled with remembrances, personal artifacts and spaces to sit and reflect.



Walk-In Mausoleums can be large or small, in any price range.



A walk-in mausoleum is just that. You go in through a door and enter the inside of the mausoleum. Inside are the crypts of the deceased, niches for cremation ashes and a space for visitors.



Non walk-in mausoleums can be large or small structures for crypts that have no access to the inside. Some have non-working doors for decoration that give them the appearance of a walk-in mausoleum.

#### NON WALK-IN MAUSOLEUMS



Some private family non walk-in mausoleums look just like walk-in mausoleums from the outside.



Since you don't have access to the inside, the crypt openings are on the outside.



Non walk-in mausoleums include lawn or ground-level mausoleums like this one.



Non walk-in Garden or Outdoor Mausoleums have no interior space for visitors.



# CHAPTER 6

## Common Reasons For a Mausoleum Burial

### ROME MONUMENT'S 2024 MAUSOLEUM GUIDE

Mausoleums are not just built by the rich and famous as symbols of prestige. Over many centuries, mausoleums have been built for people in every level of society – for a variety of reasons. Let's look at a few reasons why mausoleums provide a distinctive alternative to a traditional in-ground casket burial.



Mausoleums keep families together, in one convenient location, generation after generation after generation.



Purchase a mausoleum now and future generations won't have to worry about finding their own burial plot or buying a headstone.



You can have as many crypts and niches as you need to hold caskets and urns.



With mausoleums, families can visit any time of year – rain or snow.



Mausoleums Are Eco-Friendly, leaving a smaller footprint than a grouping of family gravesites.



The bigger size and taller height makes a mausoleum stand out in a cemetery.



In areas with high rainfall or high water tables, an above ground mausoleum with proper drainage keeps the crypts safe and dry.



Inside a walk-in mausoleum, you have space to display personal art and artifacts that tell the stories of your family members' lives.



A mausoleum says you've made significant contributions in your life and to your family.



When the cost of a mausoleum is shared among all the family members, your cost becomes a fraction of the total cost.



When the ground freezes, in-ground burials are usually put off till spring. However, crypts can be added to mausoleums any time of year.



Some people simply don't like the thought of being buried in the ground covered with dirt and weeds and whatnot.



# CHAPTER 7

## Choosing a Cemetery For Your Mausoleum

### ROME MONUMENT'S 2024 MAUSOLEUM GUIDE

The best way to start looking for a cemetery is to search the web for “Find a cemetery near me”. Find cemeteries that suit your needs and look them up on the web or give them a call. Find out which cemeteries in your area allow mausoleums and if they allow the mausoleum design you have in mind. Cemeteries have different rules and regulations concerning mausoleums. Some only allow certain types of mausoleums, certain sizes and styles, and some don't allow mausoleums at all. You may need to find out what their policy is on the disposition of cremated remains.

## TYPES OF CEMETERIES

### VETERANS CEMETERIES



Veterans Cemeteries, for military veterans and their families, are managed by the government, either local or national.

### MUNICIPAL CEMETERIES



Municipal Cemeteries are managed by a nonprofit organization governed by a voluntary board of trustees and offer plots and settings at a lower cost.

### GREEN CEMETERIES



Green Cemeteries and Natural Burial Parks are places for eco-friendly burials. These types of burials are a technique for caring for the deceased with minimal environmental impact.

### RELIGIOUS CEMETERIES



Religious Cemeteries are owned and operated by local religious organizations.

### PUBLIC CEMETERIES



A Public Cemetery refers to any cemetery used by the general community, a neighborhood, or religious organization.

### AT-HOME BURIALS



If you can't find a suitable cemetery to house your mausoleum, there is another option. Install it in on your property. Most states allow you to build a mausoleum at your home. The only restrictions are state and local laws for zoning.



# CHAPTER 8

## Ordering Your Mausoleum Pre-Need

### ROME MONUMENT'S 2024 MAUSOLEUM GUIDE

Designing, building, and installing a mausoleum can take months, if not years. That's why planning ahead - in advance of the passing of any family members – is a smart decision. When ordering a mausoleum pre-need, you pre-design, pre-plan and pre-pay for a monument according to everyone's wishes. You'll avoid difficult decisions on a big investment while in mourning and overwhelmed with funeral arrangements and other post-passing business.



1 Meet with a professional mausoleum designer to discuss your options in an unhurried manner – in person or via telecall.



2 Project how many family members might be interred in the mausoleum. How many crypts and cremation urns.



3 Choose a mausoleum type (Ground Level, Garden, Walk-in) & style (Classical, Gothic, Art Deco, Modern, Baroque, Etc.).



4 Select a color and texture of granite.



5 Decide on artwork, wording, inscriptions, sayings, and sculpted elements.



6 Where will you install the mausoleum? Which cemetery will accept your mausoleum. Or you can install it on your property.



7 How much do you want to spend? Mausoleum costs vary widely depending on type, materials, and ornamentation.



8 A mausoleum memorial artist will create a rendering that shows exactly what your finished mausoleum will look like.



9 Once you approve the design, skilled artisans sculpt and carve the granite into the extraordinary monument you envisioned.



10 Then deliver it to your cemetery anywhere in continental U.S....



11 Or store your mausoleum in our warehouse until needed.



12 The mausoleum is set and assembled in the cemetery. Engraved lettering can be added at a later date.



# CHAPTER 9

## Etchings & Engravings

### ROME MONUMENT'S 2024 MAUSOLEUM GUIDE

Personalized etchings and engravings offer families an opportunity to memorialize the life and journey *through* life of an individual or family. Creating lettering and art at the hands of a monument expert or a computerized laser can be as detailed or basic as you desire. Make your memorial a living legacy to your family with custom etching and engravings.

#### ETCHINGS



EPITAPHS & SAYINGS



INTRICATE ARTWORK



FAMILY PORTRAITS



NICHE DOORS, LETTERING & ART

#### THE PROCESS



**ENGRAVING** is the process of cutting lettering, symbols, images, and artwork into the granite using hammers and chisels or sandblasting techniques that erode away the unprotected sections of the surface, creating a high contrast between the polished stone and the unpolished sandblasted stone. Engraving is used for deeper cuts.



**ETCHING** makes shallower cuts and can create more detailed designs. Hand etchers use diamond tipped engraving tools to create intricate, detailed artwork and designs. Laser etching is used to recreate actual photographs and designs. A computerized laser burns away the stone's surface.

#### ENGRAVINGS



DEEP-CUT LETTERING



SCULPTED ART



FRIEZES, COLUMNS & CROWNS



RELIGIOUS IMAGES & SYMBOLS



# CHAPTER 10

## Materials: Granite, Marble & Bronze

### ROME MONUMENT'S 2024 MAUSOLEUM GUIDE

Mausoleums are subjected to harsh weather conditions - extreme heat and cold, direct sunlight, ground moisture, ground movement, and, of course, time. For that reason, they are built with construction materials that ensure their durability and longevity - granite, marble and bronze.

#### GRANITE



Granite is the hardest, most durable material used in mausoleums, and also the most popular.



Granite is ideal for etching and engraving artwork and lettering that will outlast other materials.



Granite comes in a wide variety of rich colors and textures.

#### MARBLE



Marble mausoleums are stylish and stunning but not as durable and more costly than granite mausoleums



Marble is a best for interior uses - walls, crypts, and sculpture - as it is not exposed to the elements.



Marble has a wide range of color options, the most popular being white and gray.

#### BRONZE



Bronze is a metal commonly used for bronze doors and other mausoleum accessories and decorations.



Bronze is primarily copper with other metals that give it superior strength, beauty, and durability.



Bronze is used for doors, window frames, gates, handrails, tomb door hardware, and niche units.



# CHAPTER 11

## Design: Sculpture, Statues & Columns

### ROME MONUMENT'S 2024 MAUSOLEUM GUIDE

A sculpture is any three-dimensional piece of art created by carving, removing material, or modelling (adding material). Custom sculptures include statues or columns. They can simply be a decorative addition to a granite mausoleum, or they can be a symbol or image with special meaning to the family. Sculpture can have religious imagery or symbols representing your family's nationality.



BAS RELIEF SCULPTURE



EXTERIOR STATUES



FLUTED COLUMNS



SCULPTED FRIEZE



INTERIOR STATUES



ENGRAVED IMAGES & SYMBOLS



EGG AND DART DECORATIVE  
SCULPTURE



DENTIL DECORATIVE  
SCULPTURE



SCULPTED COLUMN CROWNS

# CHAPTER 12

## Design: Mausoleum Architectural Styles

### ROME MONUMENT'S 2024 MAUSOLEUM GUIDE

Since ancient times, mausoleum styles have reflected a region's culture and the influences of the times they were built in. Below we show some of the popular architectural styles found in today's mausoleums including modern, classical and art deco.



CLASSICAL



GOTHIC



ASIAN



NEOCLASSICAL



BAROQUE



EGYPTIAN



ROMANESQUE



RENAISSANCE



ISLAMIC



MODERN



ART DECO



# CHAPTER 13

## Design: Walk-In Mausoleum Interiors

### ROME MONUMENT'S 2024 MAUSOLEUM GUIDE

Walk-in Mausoleums allow families to visit in comfort year-round. They also provide indoor spaces for you to decorate or use for other purposes. In addition to the crypts and cremation niches that open to the inside of the mausoleum, walk-ins can have one or more rooms to display family memorabilia and art. Some people like to have a chapel room dedicated to prayer and remembrance.



CRYPTS FOR CASKETS



STAINED GLASS WINDOWS



STATUES & SCULPTURES



NICHES/COLUMBARIUM FOR  
ASHES & URNS



CHAPEL ROOM WITH ALTAR  
& PEWS



FAMILY KEEPSAKES



RELIGIOUS ART & BUSTS



BENCHES, TABLE, ARTIFICIAL  
FLOWERS



WALL ART & PAINTINGS

# CHAPTER 14

## Design: Mausoleum Landscape Ideas

### ROME MONUMENT'S 2024 MAUSOLEUM GUIDE

There are many different ways to landscape the outdoor space around your mausoleum. To make it even more beautiful and very peaceful. To create an inviting space for family members to visit and stay awhile in comfort. Landscaping makes a big difference when you consider your options.



Make a walking path for easy visitor access and for a contemplative stroll around the mausoleum.



Create a patio that surrounds the exterior of the mausoleum. Include some benches for relaxing and remembering.



Outdoor lights bring out the mausoleum's beauty at night.



A fountain creates a graceful, flowing element to your mausoleum grounds.



Gardens can be designed to include plants, flowers, sculptures, rocks and other elements to give your mausoleum setting a Zen quality.



A water feature such as a pool or stream gives visitors a sense of peace.



# CHAPTER 15

## Design: Mausoleum Accessories

### ROME MONUMENT'S 2024 MAUSOLEUM GUIDE

You've designed your dream mausoleum. Now it's time to decorate it with your choice of mausoleum accessories. Let's take a look at some of your mausoleum design options, decorations and accessories for modern private family mausoleums and interiors.



STAINED GLASS WINDOWS



FLAGHOLDERS AND FLAGS



COMMEMORATIVE BRONZE  
PLAQUES



LAMPS



ALTAR AND PRAYER KNEELERS



WIND CHIMES



WREATH



CERAMIC PORTRAIT



VASE



# CHAPTER 16

## Tips to Buying a High Quality Mausoleum

### ROME MONUMENT'S 2024 MAUSOLEUM GUIDE

A mausoleum that is well-designed and built with quality materials by the finest artisans will last for centuries, even millennia. Here are qualities and capabilities you should look for in a mausoleum construction company in order to ensure you get the best results.



1 Offers an inhouse, professional team of designers & architects.



2 Able to connect with you anywhere in the U.S.



3 Gets granite from reputable quarries in the US and Canada.



4 Uses only high grade granite with the durability and beauty you want in your mausoleum.



5 Has its own production facility to custom make your mausoleum with quality controls.



6 Delivers mausoleums anywhere in the continental U.S.



7 Sets your mausoleum in the cemetery of your choice.



8 Assembles your mausoleum using proven techniques and high quality materials.



9 Has a long history of reliable, compassionate and professional service.



# CHAPTER 17

## Quality: Mausoleum Construction Standards

### ROME MONUMENT'S 2024 MAUSOLEUM GUIDE

In some ways, building a mausoleum is similar to building a home. Whether building a house or mausoleum, you want the best team designing it and building it, and who adhere to construction best practices throughout the process. The best mausoleum construction companies follow mausoleum design regulations and construction standards for high quality private and family mausoleums. This ensures the longevity and security of your investment and the safety of visitors.



Mausoleum construction standards include:

- First-class architectural design and structural analysis
- Engineering excellence
- Professional installation methodologies
- Solid concrete foundations
- Thorough site condition acceptability
- First-rate granite and marble installation
- Adequate crypt foundation plans
- Top-end mausoleum niche manufacturing and installation
- Design and construction for seismic load protection
- Resistance to hurricanes and storm damage
- Resistance to fire and use incombustible materials
- Properly ventilated mausoleums and crypts
- Prevention of 'mausoleum odors' created by decomposing human remains
- Electrical work complies with the provisions of the national electrical code
- Permanently secure and protected doors, windows, walls and crypts
- Proper selection of building materials
- Compliance with existing zoning laws
- On-time and on-budget
- Surpassing performance requirements
- Qualified field supervision and management
- Timely delivery and installation of mausoleums
- Quality control
- Adequate warranties
- Permitting process
- Inspection and third party vendor compliance
- Post construction support
- Reliable mausoleum cleaning, maintenance and restoration services

# CHAPTER 18

## Mausoleum Price Guide

### ROME MONUMENT'S 2024 MAUSOLEUM GUIDE

When purchasing a mausoleum for your family, obviously one's budget plays an important role in your decision on exactly what type of mausoleum you purchase. Many factors go into determining the final cost. For instance, cost varies according to mausoleum type, size, style, shape, design, ornamentation, number of crypts, and materials used in the mausoleum. The prices below are current as of January 2024 and don't include freight and installation costs. For an accurate cost including freight and installation, please call Rome Monument at 724-770-0100 and ask for Vince Dioguardi or email Vince at [info@romemonuments.com](mailto:info@romemonuments.com)

#### GROUND LEVEL MAUSOLEUMS



1 CRYPT: FROM \$15,000



2 CRYPT: FROM \$26,000



4 CRYPT: FROM \$40,000



8 CRYPT: FROM \$65,000

#### NON WALK-IN ESTATE MAUSOLEUMS



WALK-THROUGH WITH 6  
CRYPTS: FROM \$72,000



8-16 CRYPT:  
FROM \$65,000



CHAPEL STYLE:  
FROM \$400,000



GARDEN STYLE:  
FROM \$200,000

#### WALK-IN MAUSOLEUMS



2-4 CRYPTS: FROM \$109,000



6-8 CRYPTS: FROM \$145,000



12-16 CRYPTS:  
FROM \$350,000



VESTIBULE: FROM  
\$145,000



# CHAPTER 19

## Keys to Hiring a Topnotch Mausoleum Company

### ROME MONUMENT'S 2024 MAUSOLEUM GUIDE

Lots of companies sell mausoleums, but only a select few actually design and construct mausoleums. Following is what to look for when deciding on a mausoleum construction company. Most families prefer working directly with a mausoleum company, not just a mausoleum salesperson. Since there aren't many companies that make mausoleums in the US., it's likely you'll be working with an out-of-town company, but a good company is used to working remotely with clients.



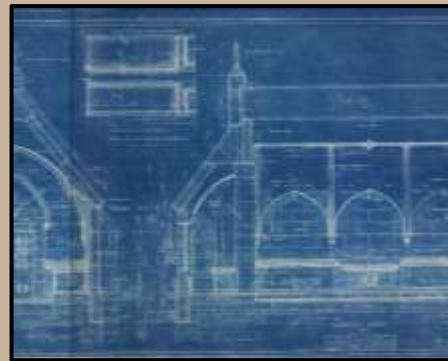
A company that doesn't value engineer their products by going the cheapest route or cutting corners on quality.



They use only the highest quality materials –including the granite for beauty and durability.



They have their own design team to ensure you get exactly what you're looking for.



They are fully transparent and let you analyze the blueprints for important construction details.



They rigidly follow mausoleum construction standards as outlined by state and local laws.



They have experience working with families and a long history of building mausoleums.



They have the resources and logistical expertise to install a mausoleum in your community.



They know the rules and regulations of the cemeteries in your area.



Every mausoleum meets strict standards for integrity from the foundation to the roof.



# CHAPTER 20

## How To Order a Custom Mausoleum

### ROME MONUMENT'S 2024 MAUSOLEUM GUIDE

Mausoleums come in all shapes and sizes and cost anywhere from under \$10,000 to over a million dollars. Either way, it's a big investment and you shouldn't go into the transaction blindly. Most Americans live in a community where there are cemeteries, but no monument company that actually *makes* mausoleums. Since your choice of a company will likely be from out of town, the transaction will likely be done remotely. A good mausoleum company can take you through the design process easily and flawlessly, no matter where they are located. Keep in mind, not all companies follow the exact steps below, but this gives you a good idea how a typical mausoleum purchase works.



Search the web for companies that make mausoleums from original designs - not from a design template in brochure.



Fill out the inquiry form on the company's web page for cost estimates for your mausoleum.



Then call the companies you feel comfortable with and that meet your budget and design requirements.



Agree on a company that matches your needs. Make sure you get blueprints, pricing, and a la cart options with first inquiry.



When you approve the final drawing, you'll make your second 1/3<sup>rd</sup> installment.



Next, you'll work with the mausoleum company to develop a design that your family loves.



For a mausoleum \$100,000 or less, pay 1/2 down (by check or bank wire transfer to avoid processing fees).



If you approve a quote of more than \$100,000, sign the order and pay a 1/3<sup>rd</sup> down deposit.



The company builds the mausoleum, piece by piece. Making a mausoleum can take a few months to over a year.



The company ships it to your cemetery. You make your final 1/3<sup>rd</sup> payment, plus shipping/setting costs.



Large mausoleums are assembled at the cemetery by the mausoleum company or cemetery (for a fee).



Pre-need purchases are often held in the mausoleum company's warehouse until a family member passes.



# CHAPTER 21

## A Quality Company = Quality Mausoleums

### ROME MONUMENT'S 2024 MAUSOLEUM GUIDE

Rome Monument, founded in 1934 by a stone artisan from Rome, Italy, is nationwide monument construction company that plans, designs and builds private family mausoleums. The family-owned company is now in its fourth generation. Vince Dioguardi leads Rome's team of designers, stoneworkers, and project managers. At Rome, the focus is always on the customer and manifesting their burial wishes by custom crafting each memorial for each family.



Rome's mausoleum artists develop an initial design for the client's review.



Sandblasting creates high contrast images by removing the highly polished surface.



Rome's artisans engrave beautiful images in the stone using old world techniques.



Lettering is cut into the stone – any style, any language.



#### ROME HEADQUARTERS, MONACA PA

Rome's main office is just outside Pittsburgh, PA, with numerous showrooms throughout the tri-state area.



#### MONUMENT/QUARRIED ROCK WAREHOUSE

With hundreds of headstones and mausoleums for you to choose, Rome's warehouse is one of the largest in America.



#### ROME WORKS ARTISAN CENTER

Here, hundreds of headstones and mausoleums are designed and constructed each year, each one of the highest quality, using the highest quality materials and craftsmanship.



When it's complete, they either store the mausoleum in their warehouse, or...



They deliver it to a cemetery anywhere in the continental U.S.



Rome's assembly crews use cranes and other heavy equipment to install your mausoleum.



Larger mausoleums are assembled at the cemetery.

# How to Order a Quality Built Mausoleum from Rome Monument

If you are interested in ordering a custom designed mausoleum for one or more members of your family, please consider talking with **Vince Dioguardi of Rome Monument at 724-770-0100.**

Vince will be happy to explain how the process of ordering works, how prices are determined, your design customization options, our mausoleum construction standards and the mausoleum setting and installation details. **Please feel free to email Mr. Dioguardi at [info@romemonuments.com](mailto:info@romemonuments.com).**

## **ROME MONUMENT**

America's Premier Private Family  
Mausoleum Design and Construction Company



ROME INSPIRATIONS

America's Highest Quality  
Monuments Est. 1934